

STEPPING STONE DRUM RIDER



Configuration:

1. 22x17.5 kick

Built-in Audio Technica ATM250DE
Dynamic-condensator mic. 2x XLR

2. 14x6 snare

3. 8x7 tom

4. 10x7 tom

5. 12x8 tom

6. 14x13 floor

7. 16x15 floor

8. hihat 14"

9. crash 14"

10. splash 8"

11. splash 10"

12. crash 17"

13. crash 20"

14. hihat 14"

15. ride 20"

16. Gong drum 20"

17. China 18"

monitor:

In-ear mono/stereo

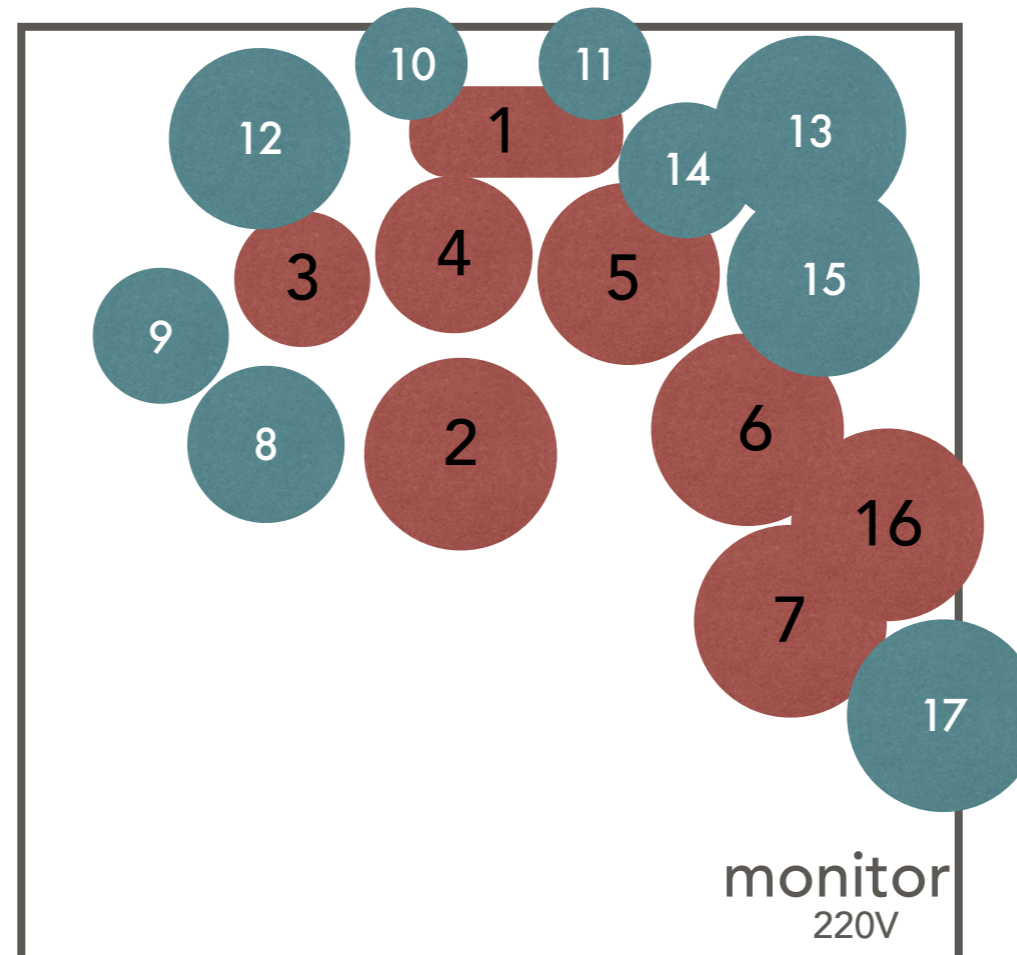
XLR F-in

Drummer:

Hans Meijer

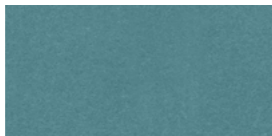
info@steppingstone.band

SONOR AQ2



drumstage metric

2Lx2Wx0.4H



mon

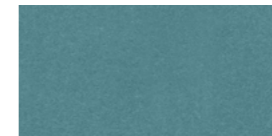


230V

Rider Stepping Stone



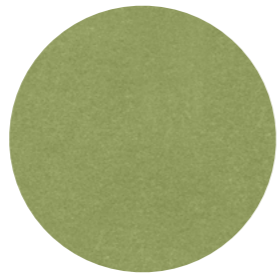
info@steppingstone.band



mon

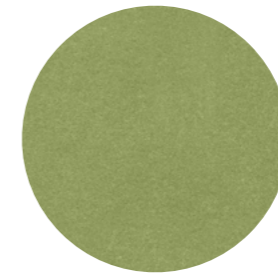


230V



Rob

Bass and vocals



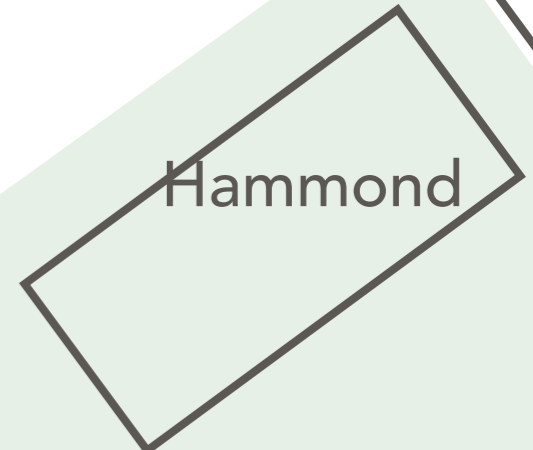
Dick

Guitar and vocals

Topspeaker (L&R) mic
SM57 or equal
Optional MD421 or equal for
low speaker



Leslie



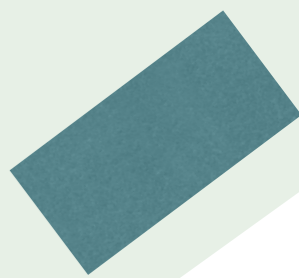
Hammond

Jan



Nord piano

DI balanced
2x jack 6.3 L&R



mon

Drumstage
See separate drumrider

Hans
drums

230V



Kemper Profiler
Fender 2x12" 1x 15"



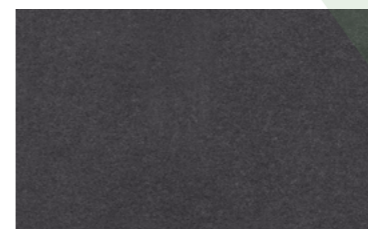
230V



DI balanced
XLR out front
L&R



Fender amp



230V



230V

